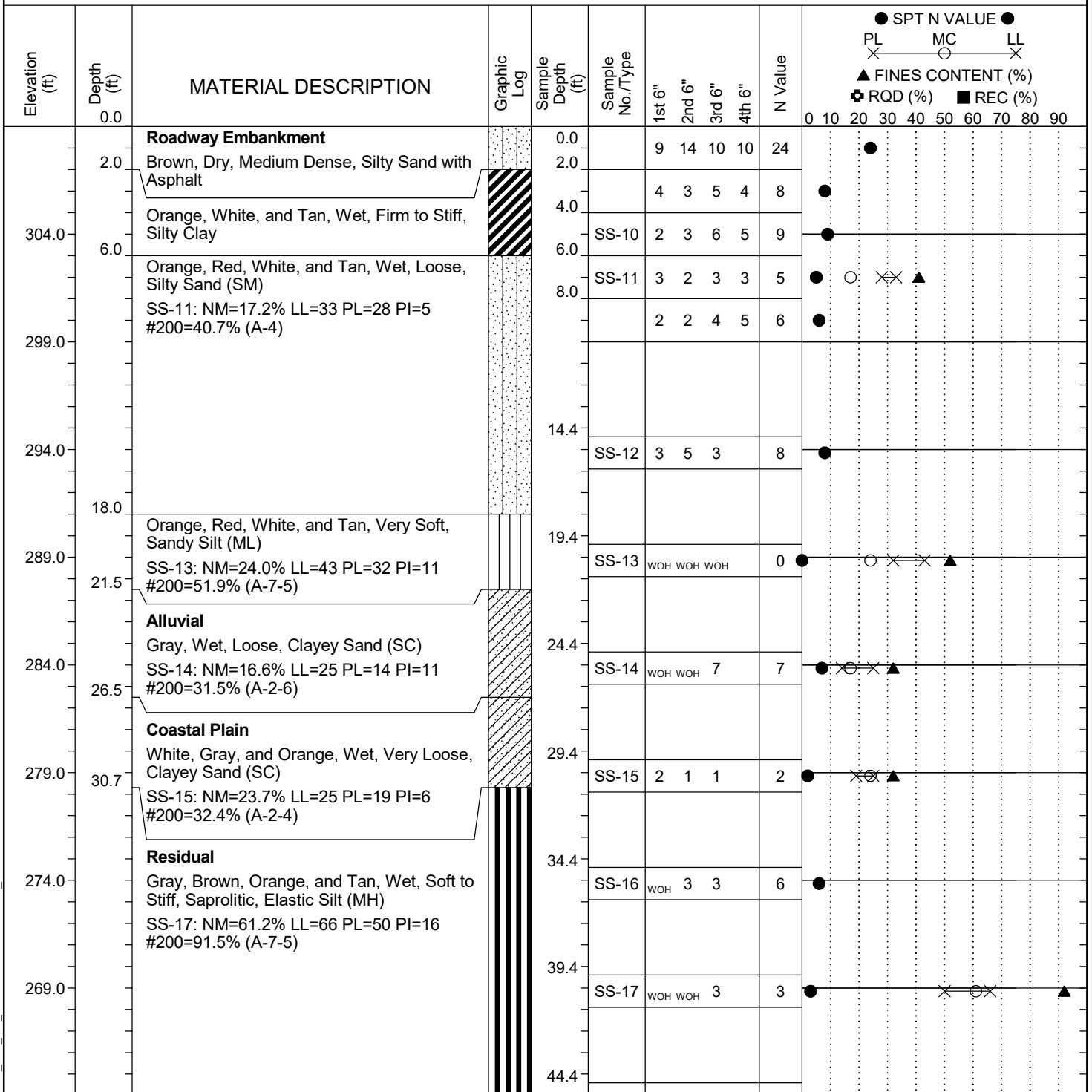


Project ID:	P039719	County:	Richland	Boring No.:	G-109
Site Description:	Carolina Crossroads Phase 2			Route:	Ramp
Eng./Geo.:	C. McIlroy	Boring Location:	395+91	Offset:	20 RT
Elev.:	309.0 ft	Latitude:	34.03917627	Longitude:	-81.09593509
Total Depth:	84.6 ft	Soil Depth:	84.6 ft	Date Started:	4/27/2022
Core Depth:	N/A ft	Date Completed:	4/27/2022	Alignment:	RAMPF
Bore Hole Diameter (in):	2.25	Sampler Configuration		Liner Required:	Y (N)
Drill Machine:	D-50 #439	Drill Method:	RW	Liner Used:	Y (N)
Core Size:	N/A	Hammer Type:	Automatic	Energy Ratio:	90.8%
Driller:	R. Cassell	Groundwater:	TOB	24HR	Cave @ 8'



LEGEND

Continued Next Page

SAMPLER TYPE		DRILLING METHOD	
SS - Split Spoon	NQ - Rock Core, 1-7/8"	HSA - Hollow Stem Auger	RW - Rotary Wash
UD - Undisturbed Sample	CU - Cuttings	CFA - Continuous Flight Augers	RC - Rock Core
AWG - Rock Core, 1-1/8"	CT - Continuous Tube	DC - Driving Casing	